



# NEWSLETTER OF THE AMERICAN MALACOLOGICAL SOCIETY



OFFICE OF THE SECRETARY

DEPARTMENT OF MALACOLOGY, ACADEMY OF NATURAL SCIENCES

1900 BENJAMIN FRANKLIN PARKWAY, PHILADELPHIA PA 19103-1195, USA

VOLUME 36, NO 1. SPRING 2005

<http://erato.acnatsci.org/ams>

ISSN 1041-5300

## ANNOUNCEMENTS

### 71<sup>ST</sup> ANNUAL AMS MEETING

ASILOMAR CONFERENCE GROUNDS  
PACIFIC GROVE, CALIFORNIA  
26 - 30 JUNE, 2005

*By Society President Dr. Dianna K. Padilla*

**MEETING WEBSITE:**

[http://biology.fullerton.edu/wsm/2005/wsm2005\\_introduction.html](http://biology.fullerton.edu/wsm/2005/wsm2005_introduction.html)

I am very happy to announce that the 71<sup>st</sup> Annual Meeting of the American Malacological Society will be held jointly with the 38<sup>th</sup> Annual Meeting of the Western Society of Malacologists at the Asilomar Conference Grounds in Pacific Grove, California, on the beautiful Monterey Peninsula. The meeting will begin at dinner on June 26<sup>th</sup>, followed by a welcoming social, and end at lunch on the 30<sup>th</sup>.

Asilomar is an architectural showcase for two of America's most prestigious architects: Julia Morgan, California's first licensed woman architect, who also designed Hearst Castle; and John Carl Warnecke, internationally known designer of such structures as the grave site memorial of President John F. Kennedy. Asilomar houses the largest collection of Morgan-designed Arts & Crafts style buildings at one site, completed between 1913 and 1928; and seven newer building complexes designed and built by Warnecke between 1959 and 1968. As a member of the California State Park system, Asilomar includes 107 acres of forests, dunes, and coastline situated on the Monterey Bay National Marine Life Sanctuary.

We have an exciting scientific program planned with three symposia, one sponsored by each society and one joint sponsored symposium. We look forward to many exciting contributed papers and posters to compliment these symposia.

Titles for symposia talks will be posted shortly. The three planned symposia are:

**Joint AMS-WSM symposium: 'From Development to Extinction: Molluscan Neontology and Paleontology'**, organized by Laurie Anderson and Audrey Aronowsky of Louisiana State University. Speakers include: Pat McMillan, Dave Goodwin, Amelie Scheltema, Peter Roopnarine, Dianna Padilla, Laurie Anderson, Mike Hadfield, Audrey Aronowsky, Chris Meyer, Jon Todd, Geoff Trussell, Lindsey Leighton, Rachel Collin, William Miller, Rowan Lockwood, Peter Petraitis and Carol Tang.

**AMS Symposium: 'Pacific Island Land Snail Diversity: Origins and Conservation'**, organized by Diarmaid Ó Foighil, University of Michigan. Speakers include Diarmaid Ó Foighil, Mike Hadfield, Carole Hickman, Bryan Clarke, Paul Pearce-Kelly and B. Holland. **See page 6.**

**WSM Symposium 'Gastropod Mating Systems'**, organized by Janet Leonard, UC Santa Cruz. Speakers include Yoichi Yusa, Yasuhiro Nakashima, Heike Reise, Patrick Krug, Andries ter Maat, Ronald Chase, Earl Mayeri, Rick Grosberg and Janet Leonard.

One of the nice features of having a conference at Asilomar is that it is designed to facilitate meetings such as ours, and the lodging rates include three meals a day plus the costs associated with our meeting rooms. The room and meal packages are very reasonably priced (\$341.56 for a shared triple, \$426.84 for a shared double including all taxes), and includes four nights' lodging and three meals a day starting at dinner on the 26<sup>th</sup> through lunch on the 30<sup>th</sup>. Please visit the meeting web site (see above) for the downloadable lodging form and feel free to contact the conference center if you have any questions. The folks at Asilomar are very happy to help you arrange your housing if you want to come early, stay late or need to find alter

native local lodging.

Registration is less expensive than in the past several years. Early registration for members is \$130, and student early registration is \$80. Registration fees include the banquet and all socials. There are many excellent local hotels if you prefer to stay off site. Because the cost of the rental of meeting rooms is bundled with the on site lodging fees, we are charged for all off site attendees to the meeting. If you choose to stay off site you will have to pay an additional fee (\$34, or \$10 for one day) to cover this cost. For those of you familiar with Asilomar, our main meeting room will be the Chapel, which includes two side rooms (one with a fireplace) and a grand piano (perhaps some of our local talent will treat us during socials).

The weather at Asilomar is mild year round, and midday temperatures average about 60-65°F. Outdoor activities available at Asilomar include bicycle rentals, bird watching, strolling along the boardwalk, swimming in a heated pool, and volleyball. Ping pong and billiards are available in the Social Hall. Visitors can take a self guided tour of Asilomar's historical architecture and natural surrounding including the Monarch Grove Sanctuary in Pacific Grove.

The highlight for many who visit Monterey and Pacific Grove is the Monterey Bay Aquarium [www.mbayaq.org](http://www.mbayaq.org) which many consider the best public aquarium in the US. We will be having a social at the aquarium and are hoping to arrange for visits or tours, so check the meeting web page for periodic updates. Next to the aquarium, historic Cannery Row is a great place for Steinbeck fans. You can visit Doc Ricketts' home and laboratory, dine at wonderful restaurants, shop and visit galleries. Pacific Grove also has Natural History Museum and nearby Carmel by the Sea is a great place to visit or spend a day. For those who golf, Pebble Beach is just down the coast. Asilomar is close to Big Sur (30 mi), Hearst Castle in San Simeon (65 mi), Moss Landing/Elkhorn Slough (25 mi), and Mission San Juan Bautista (and Mission San Juan Bautista State Historic Park) (45 mi). The Central Coast area of Monterey County has over 50 wineries, most of which have tasting rooms and some of which offer tours of their vineyards and facilities.

We are in the process of organizing field trips, which will include a tide-pooling shore tour, a visit to a local fossil site (guaranteed to have a lot of molluscs) and, if there is sufficient interest, we will

organize a tour of local wineries.

Asilomar is approximately 120 miles south of downtown San Francisco (about 105 miles from San Francisco International Airport, SFO) and about 75 miles south of San Jose (SJC). The Monterey Peninsula Airport (MAR) is very close to the center (~10 miles). Local taxi companies service the Monterey Peninsula Airport as does the Monterey-Salinas Transit (MST) bus system (\$1.75 one way, and takes about 30 minutes). There are limousine services from SFO (~\$40) and SJC (~\$30) to Monterey. Transportation and rental car information can be found at the Asilomar web site [www.visitasilomar.com](http://www.visitasilomar.com)

Abstracts for oral presentations and posters are due March 31. Instructions for submitting abstracts and downloadable lodging and registration forms can be found at the meeting web site (see above). You can find a link to the meeting web site from the AMS web site. Check the site for periodic updates and information as it becomes available. See you at Asilomar in June!

**Dianna K. Padilla**

President, American Malacological Society  
[padilla@life.bio.sunysb.edu](mailto:padilla@life.bio.sunysb.edu)



**THE AMS 2005 STUDENT RESEARCH  
GRANT COMPETITION**

The American Malacological Society is pleased to announce that applications are now being accepted for the 2005 Student Research Grant Competition.

- The purpose of the grant is to support student research on mollusks.
- The sponsored research should be part of the applicant's graduate thesis and it is expected that it will be published in a peer-reviewed journal.
- One or more grants will be awarded each year, subject to availability of funds. No single grant shall exceed US\$1000.
- Award winners are requested to present the results of their research at the annual meeting of the AMS.
- The applicant must be a member of the AMS.

Applications must include the following:

1. A summary of the proposed research, not to exceed two pages, which includes title, goals, methods, timetable, plans for publication, and a budget specifying the need for the grant.

2. A short curriculum vitae.
3. A confirmation of the student's status at an accredited university.
4. A letter of support from the student's advisor.
5. Applications must be received by **March 15, 2005**.

Complete application packets should be sent to:

**Dr. Roland C. Anderson**  
The Seattle Aquarium  
1483 Alaskan Way  
Seattle, WA 98101 USA

Electronic submissions may be sent to:  
[Roland.Anderson@Seattle.Gov](mailto:Roland.Anderson@Seattle.Gov)

**NEW** Effective in 2005, Eligibility for the Constance Boone Award for the best student paper or poster at the annual meeting is extended to those who receive their degree within 6 months of the meeting's abstract submission deadline.



#### MEMBERSHIP DIRECTORY

The membership directory is available to all current Society members. It is distributed automatically once a year by e-mail to the majority of members. Postal distribution (in loose-leaf form) is available for those who prefer to receive a printed copy. All corrections or revisions to the directory should be sent to the Secretary at the address at the head of this page.



#### OUR NEW WEBMASTER

The AMS has a new webmaster, Liath Appleton at the University of Michigan. She takes over from the web site's creator Dr Dan Graf, to whom the Society owes a debt of gratitude. Liath is carrying on the good work, and the site is the prime source for news about the society and related matters. The Society is aiming to develop its web activities and to offer more services to members via the Internet.



#### COA CONVENTION

*From Anne Joffe, Sanibel:*

The Conchologists of America will hold their annual meeting, July 19-24th at the beautiful Sanibel Harbour Resort and Spa, Punta Rassa, Florida. This is located just before you cross the Sanibel

Causeway, and is situated on 144 acres overlooking San Carlos Bay, with water views on all sides. There will be pre convention field trips on Monday, July 18th, including a fossil trip, diving and shallow water collecting, as well as several during the week. The Dealer's Bourse will be on Saturday, July 23 and Sunday, July 24, with the farewell banquet that same evening.

Along with our usual wonderful and informative programs, we will have "An Evening with Peter Dance", who will be debuting his new book, as well as giving a fantastic program. There will be our annual auction, with auctioneers Henry Chaney and Paul Callomon, and several workshops and seminars. A little something for everyone.

For information on this upcoming event, call or write: Anne Joffe, 239-472-3151 or [Sanibelchiton@aol.com](mailto:Sanibelchiton@aol.com)



#### BOOK REVIEW

*Land Snails of British Columbia*  
Royal British Columbia Museum Handbook  
Robert G. Forsyth

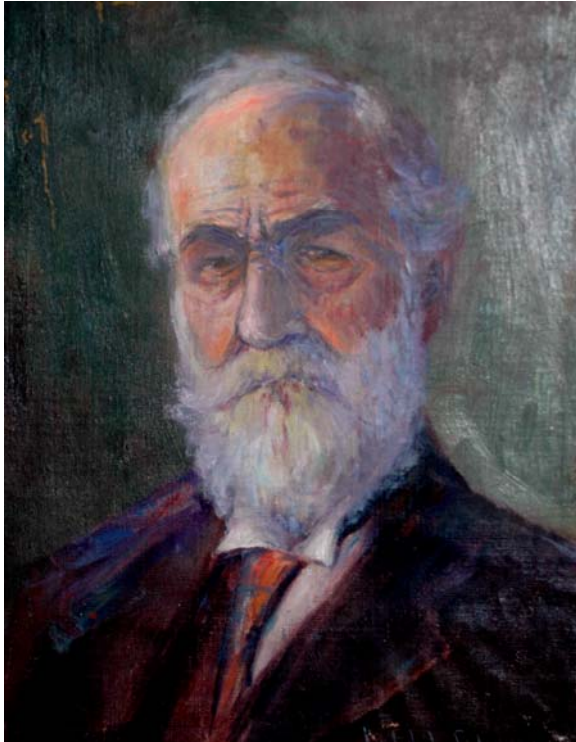
Published in September 2004. CA\$25.95 plus postage. ISBN 0-7726-5218-X  
Available in the USA from University of Washington Press, or e-mail [shop@royalbcmuseum.ca](mailto:shop@royalbcmuseum.ca)

Local people in B.C. often refer to two varieties of slugs – "good" slugs, the native giant Banana Slug *Ariolimax columbianus* and "bad" slugs, the invasive giant Black Slug *Arion spp.* In contrast, *Land Snails of British Columbia* covers the natural history of the entire terrestrial gastropod fauna including 92 species of snails and slugs. This book is the first comprehensive checklist and key to landsnails in western Canada, and clearly, it fills an important gap. I am personally impressed that Forsyth declines to cash in on the tremendous popularity of the Banana Slug (*Ariolimax columbianus*) and gives it only equal or less coverage than other species, many of which are very poorly studied. Every snail or slug has a one to two-page description including identification features, distribution and life history, and a selection of essential primary references. Forsyth uses contemporary classification based on recent work rather than relying on the classic Pilsbry definitions, but also includes common names for all taxa. The most attractive feature of the book is the identification key, for use in the field, presented in terminology

that is precise (and impartial) but not intimidatingly technical. Copious black and white illustrations also help distinguish the animals. Since no gastropods are endemic to B.C., this publication will be of great use to all malacologists west of the Rocky Mountains. The book is up to the high standards of the other Handbooks published by the Royal BC Museum, and a great addition to any natural history library.

Julia Sigwart

#### ARTICLE PUBLISHED ON AMS FOUNDER



**Norman W. Lermond (1861-1944)**  
(AMS Archives)

From Scott Martin

The American Malacological Society (formerly American Malacological Union) was the brainchild of Norman Wallace Lermond (1861-1944), an amateur naturalist from Maine. Lermond corresponded with nearly 200 conchologists around the country, and invited them to the founding meeting of the AMU in Philadelphia in April 1931.

For several years thereafter, he served the society in a secretarial capacity. Lermond was enthusiastic about all forms of natural history, but shells were his particular passion. He published several works on Malacology, including two books. AMS member Scott M. Martin ([smartin@cas.org](mailto:smartin@cas.org)) has published a paper entitled 'Autobiography of Normal

Wallace Lermond, Maine's Naturalist/Socialist' (*Northeastern Naturalist*, 2004, 11 (2):197-228). The paper contains Lermond's unfinished autobiography, followed by a synopsis of his natural history career by Martin and a list of Lermond's scientific publications. Lermond established the so-called Knox Academy of Arts and Sciences at Thomaston, Maine, replete with its own museum building housing an extensive natural history collection. The edifice remains today and has been restored as a private residence. In 1941, Lermond hosted the eleventh annual meeting of the AMU at the Knox Academy and in nearby Rockland, Maine. Upon his death, Lermond's collections were dispersed, mostly to parts unknown. His shell collection was acquired by Maine's Colby College, and portions later went to Harvard University and the Delaware Museum of Natural History. Lermond was in the vanguard of the development of socialism in this country and ran for governor of Maine in 1900 on the Socialist ticket. His Socialist activities have been chronicled in two books by Maine political scientist Charles A. Scontras: *The Socialist Alternative: Utopian Experiments and the Socialist Party of Maine, 1895-1914* [1985] and *Organized Labor in Maine: War, Reaction, Depression, and the Rise of the CIO, 1914-1943* [2002].



#### NEWS FROM THE MALACOLOGY COLLECTION OF THE CINCINNATI MUSEUM OF NATURAL HISTORY AND SCIENCE

From Dr F. Borrero

Formerly the Western Academy of Science and the Cincinnati Society of Natural History, the Cincinnati Museum of Natural History and Science (CMNHS) is part of Cincinnati Museum Center (CMC), and has included a collection of mollusks since at least 1876. Cincinnati was an important center of malacological activity in Ohio and the Midwestern USA during the late 19<sup>th</sup> century, and a number of notable early American malacologists had various types of association with the collection and with malacology in the region. Substantial activity continued through much of the 20<sup>th</sup> century, but declined due to the absence of permanent staff.

In 2001, The Malacology collection was moved to the Geier Research and Collections Center, a modern facility where CMC maintains its major collections and research laboratories. The collection includes freshwater, terrestrial and marine mol

lusk of worldwide distribution, mainly from the classes Bivalvia and Gastropoda. Dry specimens are held in 45 cabinets with approximately 800 drawers. A conservative working estimate places the total number of lots in the tens of thousands. In addition, large amounts of material remain in unsorted boxes. Of particular value and extent are holdings of freshwater mussels and gastropods from the Midwest and other US regions, as well as freshwater and terrestrial mollusks from the Americas, Africa, and Asia. Several type specimens are held in the collection, and more are likely to be found. Most of the collection has not been curated and remains un-cataloged, or cataloged in formats not amenable to modern systematic research.

Since 2003 we have been working on revitalizing the mollusk collection, and have adopted a unified, modern cataloging system. We began working with the non-marine mollusks, and have made important progress with US freshwater mussels and freshwater and terrestrial mollusks from South America. In addition, recent specimen collections have been made as part of currently funded field research projects, and personal interests of staff members. An additional large and valuable collection of freshwater mussels from the Midwest was recently accessioned. CMC would like to encourage the use of its collections for scientific or educational purposes through visits, temporary loans or other means.

Contact information for the Malacology Collection is as follows:

**Cincinnati Museum Center at Union Terminal**

1301 Western Avenue, Cincinnati, OH 45203

**Dr. Stephen Matter**, Curator of Zoology,  
[smatter@cincymuseum.org](mailto:smatter@cincymuseum.org), (513) 455-7163

**Dr. Francisco J. Borrero**, Research Associate & Adjunct Curator of Mollusks,  
[borrerof@countryday.net](mailto:borrerof@countryday.net), (513) 368-6515

MALACOLOGIA  
INTERNATIONAL JOURNAL OF  
MALACOLOGY  
*Special offer*

Malacologia offers vols 1-45 at a special discount rate of 80% or \$800.00 plus mailing. Volumes 18 and 17 (1) of this series have long been out of print. This offer expires at the end of 2005.

Malacologia also offers a special discount for volume 46 (2) of 2004. This "book" of 456 pages is entitled "*Bivalve Studies in the Florida Keys*" It is the Proceedings of the International Marine Bivalve Workshop at Long Key, Florida, July 2002. There are numerous color figures and the science is multidimensional, ranging from molecular phylogeny to comparative morphology. A critical catalog and annotated bibliography of marine bivalve records for the Florida Keys is included. The discount price is \$50.00 plus shipping. This offer expires at the end of Sept. 2005. Those interested should contact the Malacologia business manager, Caryl Hesterman by email at [malacolog@jersey.net](mailto:malacolog@jersey.net) and cc [georgedavis99@hotmail.com](mailto:georgedavis99@hotmail.com)

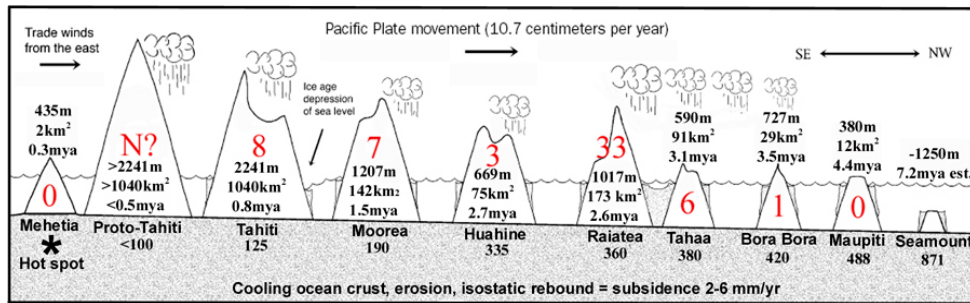
*George M. Davis/editor, Malacologia*

**AMS SYMPOSIUM  
PACIFIC ISLAND LAND SNAIL DIVERSITY: ORIGINS AND CONSERVATION**

The terrestrial snail faunas of the Pacific islands have attracted considerable scientific interest for two very different reasons. Classically, they have been viewed as influential examples of evolutionarily rapid endemic species radiations. Unfortunately, many of these faunas are now best known as the victims of mass extinction events. This poignant blend of exceptionally high biological interest and extraordinary vulnerability represents the two primary themes of the June 29<sup>th</sup> symposium. Our speakers will address how their work on endangered wild populations, captive zoo populations and archived museum material aims to enhance our understanding of how these faunas evolved and how some of them might perhaps be saved. Sponsored in part by [NSF 0425984](#) to Diarmaid Ó Foighil.

**EVOLUTION ON OCEANIC ISLANDS**

[Carole Hickman](#)



Schematic representation of the geological history of the main Society Islands, modified from Craig (2003). Also shown, in red, are the numbers of endemic species of *Partula* per island (Coote and Loeve, 2003).

**PACIFIC ISLAND SUCCINEIDAE**

[Brenden Holland](#)

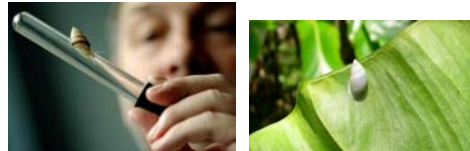


**CONSERVATION AND EVOLUTIONARY BIOLOGY OF HAWAIIAN ACHATINELLIDAE**

[Mike Hadfield](#)



**FOCUS ON SOCIETY ISLAND PARTULIDAE**



Captive

Remnant Wild

[More information](#)

**EVOLUTION AND CONSERVATION OF SOCIETY ISLAND PARTULIDAE**

[Bryan Clarke](#)

**HISTORICAL PHYLOGENY OF TAHITIAN PARTULIDAE**

[Diarmaid Ó Foighil](#)

**INTERNATIONAL PARTULA PROGRAMME**

[Paul Pearce-Kelly](#)

**CURRENT STATUS OF SOCIETY ISLAND PARTULIDAE**

[Trevor Coote](#)